

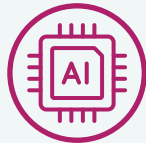
Cerence Drive

Powering the smartest assistants on the market. Period.

Cerence Drive delivers the industry's most intuitive automotive and mobility voice assistants. This is our most robust, automotive-grade portfolio of products, services, toolkits, and innovations that define in-car experiences for leading automakers around the world.



Controls for the whole ecosystem



Optimized safety through intelligence



Best-in-class security and latency



An open solution ready for your brand



A platform free of external agendas

Cerence Drive not only understands individual preferences, but also personalizes preferences and entertainment and executes complex, contextual commands flawlessly.

It can also find preferred parking, play users' favorite songs, direct them to the gas stations with the best prices, and prioritize the voices it needs to hear, while muting the ones it doesn't.

Cerence supports automakers with all these capabilities to maximize the safety, productivity and enjoyment of every customer journey, while elevating the identity of each unique brand.

Cerence Drive

SMARTER

The smartest assistant on the market

Cerence Drive delivers an effortless, unforgettable in-car experience. With it, users can manage content, access third-party services, and save their personal profiles. It not only knows which vehicle occupant is delivering commands, but also where he or she is sitting in the cabin. Finally, it learns each user's preferences, drawing from diverse sources to personalize its recommendations.

Controls for the whole user ecosystem

With our smart home function and third-party services, users can activate their home alarms and turn on their office lights—all by using voice in their car. Based on two types of powerful AI, our cognitive arbitrator integrates disparate assistants and services to make each car a control center for connected living, working, and mobility.

SAFER

Improved safety through intelligence

Our AI-driven natural language understanding (NLU) yields a more intuitive dialogue with the mobility assistant, freeing drivers to stay focused on the road ahead. And, because Cerence Drive is integrated with the car's HMI, it easily accesses sensors to address diagnostic information or to alert drivers when service is needed.

Best-in-class security and latency

Cerence Drive combines embedded and cloud-based services to create a hybrid solution that maximizes access, protects data, and safeguards against connectivity interruptions—regardless of location or zone.

MORE EXPERIENCED

Unrivaled innovation leadership

Cerence Drive is the #1 OEM partner in AI-optimized mobility solutions, improving the ride in 325+ million vehicles shipped globally. With our legacy of leadership in such solutions, we are a trusted partner to vehicle manufacturers and Tier 1 suppliers around the world.

Excellence that keeps evolving

We never stop improving—with real-time data provides powerful insights into your customers' preferences, evolving dramatically with each service update. What does this mean for drivers? More content. Better content. Managed connectivity. Selective third-party providers.

MORE YOURS

The solution is open. Options abound

Don't settle for out-of-the-box. Cerence Drive is an open solution that is ready for your brand signature. The options include from 50+ languages to hundreds of content domains to a custom UX.

A platform free of external agendas

Trends, innovations, domains, and technologies come and go. The ability to outlive them—just as your car will—is one of the hallmarks of a truly independent platform. Unlike some competitors, we don't have an agenda, and we'll never use your customer data for any reason other than to make your systems better, faster, and more powerful.